

Saint John Neumann Parish sunbury, Ohio

Faith, Family, and Tradition



Building Today for Tomorrow

Capital Campaign 2010 ~ 2011

Goal \$2,950,000 ~ Challenge Goal \$3,600,000

Faith, Family, and Tradition

~

Building Today for Tomorrow

Campaign Prayer

*With the guidance of the Holy Spirit and God's Word
and nourished by the Eucharist,
we ask the Lord to cultivate our personal faith lives
and our parish community.*

*May we continue to encourage the involvement of
each and every member, youth and adult
in our Christian family. May our generous giving
be pleasing and acceptable to You,
for Your glory and to build the Kingdom of God.
We pray that all who come through our parish doors
find faith, hope, and love.*

*St. John Neumann, pray for us
and the success of our parish campaign
to build for our present and future needs.*

Amen.



A Message From Father

Dear Parishioners,

The poet Edward Everett Hale wrote, "I am only one, but still I am one. I cannot do everything, but still I can do something; and because I cannot do everything, I will not refuse to do the something I can do."

As you know, last winter our parish conducted a feasibility study to assess the interest in, and support levels for, the construction of a new Parish Center with a large social area and classroom and meeting space, renovation of our existing Social Hall into Parish Offices, and additional parking spaces. This study was a component of our long-range plan, which we pray will guide us in fulfilling not only our immediate needs but also the future needs of our rapidly-growing and very dynamic parish. The results of the study, which we shared with the parish in the spring, indicated significant levels of interest and support, so we are moving forward in faith to launch our capital campaign to secure the funds necessary to support our vision for our future.

The theme of our campaign is "Faith, Family and Tradition ~ Building Today for Tomorrow". We are delighted to share the opportunity this campaign presents with each parish family. A successful campaign will be not only a gift to ourselves, but a priceless endowment for our children and those who follow us in faith.

This brochure is designed to explain the details of our plan and also to provide both guidance on some important pledge options and our recognition opportunities. We also have some wonderful memorial opportunities. They, too, are outlined here. Our committees have worked tirelessly to establish a proper balance between satisfying our needs and preserving good stewardship. We are convinced our needs are significant, yet our potential is also great.

Whatever you decide, please know that I am grateful for all that you have shared with us in the past. I will keep this campaign and building project in my prayers, as well as you and your loved ones.

Sincerely Yours in Christ,

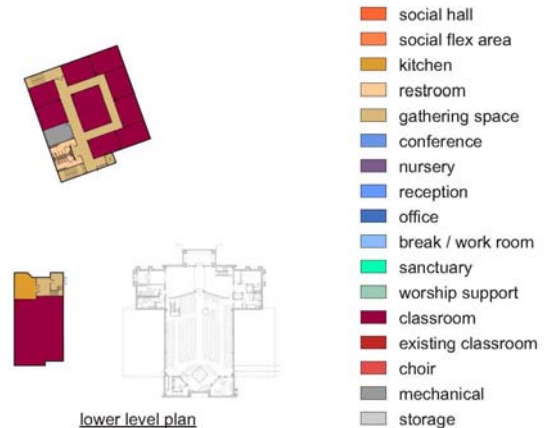


Fr. David W. Sizemore
Pastor

Faith, Family, and Tradition

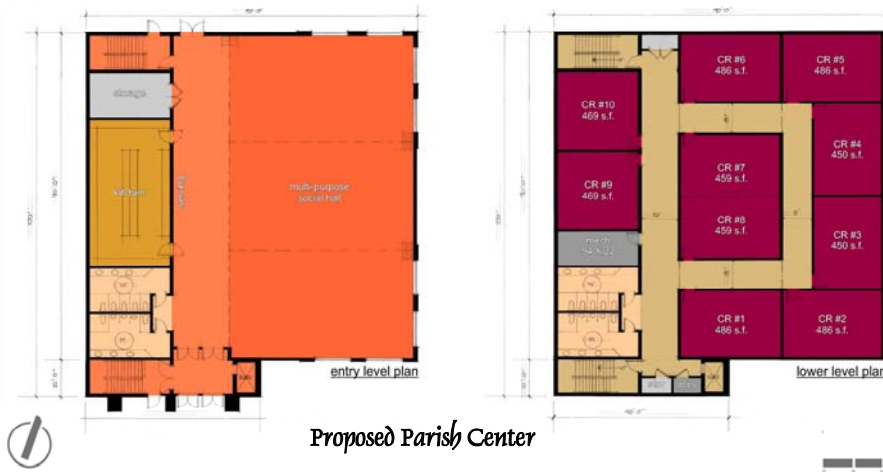
Building Today for Tomorrow

Saint John Neumann Parish



Case for Giving

Architectural Renderings



Over the past five years, our parish continues to grow by over 100 families per year. With this growth, we have added and expanded programs for religious education, faith formation, spiritual growth and social activities. We have outgrown our parking space, social space, office space, classroom and meeting space. Our parish made the sacrifices necessary to build our beautiful church - the centerpiece of our parish grounds. Thanks to the support of many of our parishioners, we have paid off the loan incurred in building our church, as of the end of December 2010. Now, after much prayer and deliberation, a parish-wide survey and needs assessment, a professional feasibility study, town hall meetings and meetings with an architect selected by our parishioners, we are embarking on an ambitious, but very necessary next component of our strategic plan to address our congregation's most fundamental facility needs.

The Proposed Capital Campaign, to include a new Parish Center, outlined below, will cost \$2,950,000. This amount would fund our most critical, immediate needs for classroom, meeting, social, office and parking space. As we continue to grow, our studies produced other items (enhancements) that would benefit the project IF we can raise the additional amount they would cost, which would be approximately \$600,000. These challenge goal items would bring the total cost of this project to \$3,600,000.

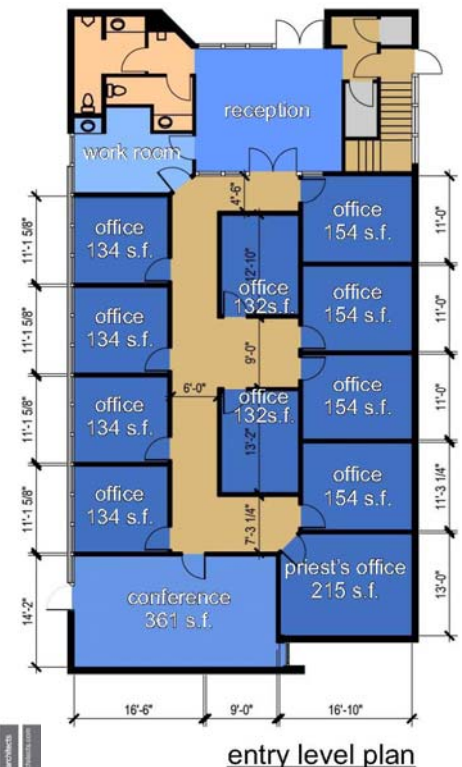
Campaign Breakdown: Basic Components: \$2,950,000

- 1) New Parish Center
 - Multipurpose Room that seats 300
 - Classrooms for children's and adult religious education and group meetings
 - Parish Center Kitchen
 - Elevator to Lower Level
- 2) Renovate Existing Upper Social Hall
 - Bring parish offices back onto campus
- 3) Expand Parking Spaces

Campaign Breakdown: Challenge Goal Components: \$600,000

- 1) Renovations to the Lower Social Hall
 - Flexible space for gatherings
 - Additional classroom space
 - Deacon and Counselor office
- 2) Larger, efficient access to both the Upper and Lower Parish Center and extra storage
- 3) Nursery/Children's Area
- 4) Choir Space
- 5) Movable dividers for the Parish Center's multipurpose room that allow the room to be divided into 3 separate rooms

Proposed Renovations to Social Hall



We have prioritized the challenge goal enhancements as listed above, if we raise more funds than are required for the Proposed Capital Campaign Basic Plan.

Frequently Asked Questions

Q. What is the overall goal of this Building Project at St. John Neumann?

The purpose of the St. John Neumann Long Range Planning Committee (LRPC) is to assist the Pastor and Parish Council in planning for the maintenance and growth of the parish. To that end, the LRPC developed a 10-Year Master Plan to identify our facility needs. As a growing Parish, through our Spring 2009 Parishioner Survey we identified the need to provide additional meeting space for our expanding activities. Therefore, our 10-Year Master Plan includes recommendations to:

- † bring our Parish Administrative Offices back to the campus,
- † provide on-site facilities for our Parish Religious Education (PSR) program, middle school EDGE program, high school Life Teen program, and our multiple Adult Religious Education programs,
- † provide meeting and social space for our ministries and group gatherings,
- † expand the parking lot to accommodate our growing parish.

Q. The campaign will seek to raise a minimum of \$2.95 million with a challenge goal of \$3.6 million; how will we accomplish this?

We will approach each parish family with a request to make a sacrificial pledge over a three-to-five year period to support this important effort. The decision to launch a campaign was made after a very positive response to the feasibility study last winter. Our campaign will be one that is conducted prayerfully, personally and pastorally. Our commitment to you is that *we will only build what we can afford.*

Q. What does a “challenge goal” mean?

Our challenge goal amount reflects the additional costs of the elements of the project that our parish indicated it wants to have, but that fall just below the other elements in our priority list. Thus, if our campaign raises the minimum amount, \$2.95 million, we will not add these items to our project.

Q. Do we still have debt from building the church? What if I haven't completed my Debt Reduction Campaign Pledge?

No! The debt incurred in building our church was retired in December 2010 thanks to parishioner pledge payments and the help of parish savings. We ask anyone who made a debt reduction pledge with payments due beyond December 2010 for permission to apply those payments to this new Parish Center Capital Campaign.

Q. Each of us is being asked to consider pledging a specific amount of money; how are these figures determined?

The amounts are determined in two ways. Many of our parishioners were interviewed during the study and indicated the amounts they were willing to offer, so these amounts are reflected in their letter. Those not interviewed or those not indicating an amount have numbers determined by a proprietary formula developed by our counsel, the Cunneen Company; this formula is based on the individual household's giving history to the parish. The formula takes into consideration the giving patterns of Catholic families across the United States. That is, however, just a starting point. What we ask each family or household to do is to take this amount into prayer and then determine the level of gift by applying the principles of Christian stewardship. The principles are two-fold; they are giving in proportion to one's blessings and also giving from one's substance, not one's excess. Thus the amount suggested will be just right for some, too little for others and perhaps too much for some of us.

**DO I NEED TO MAKE
A DOWN PAYMENT?**

*We suggest a 10% down
payment when the pledge is
made, but this is not required.
You may give less, give more,
or make no down payment at
all. The important step is to
make the pledge.*

Q. What if I never make pledges?

Most people take advantage of time-payments for major purchases such as buying a home or a car. A pledge to this campaign can be considered a “time-payment plan” that makes it possible for you to meet your parish obligations without undue hardship. Pledges enable you to consider a more significant contribution to the campaign rather than a one-time gift.

Q. Is my pledge over and above my Sunday Offertory?

Yes. You are asked to maintain your Sunday offerings because the parish will continue to have normal operating expenses.

Q. What happens if I cannot fulfill my pledge?

Pledges are good faith intentions and are not legally binding. They can be re-structured, put on hold or cancelled as circumstances warrant; just let the parish know.

Q. Who will be conducting our campaign?

The Cunneen Company of Hamden, CT has been selected as our counsel for this effort. Their Vice President of Consulting, Harry Colin, will be here to counsel our efforts. Harry also conducted our feasibility study last winter and is familiar with our parish and many of our parishioners.

Q. When will we begin our project? When will “the shovel hit the ground”?

The diocese will allow groundbreaking for the new Parish Center once we've accomplished two goals. The first is to raise 100% of the cost of our project in pledges and secondly, we must have 50% of the cost on deposit.

Q. Why are you conducting a Capital Campaign now?

We understand that many parishioners have been negatively impacted by the recent downturn in the economy, and may not be able to make a financial commitment if they are underemployed or unemployed at this time. However, our parish is growing and we continue to expand our programs to help meet the spiritual needs of our parishioners as they live in a world of uncertainty and multiple challenges. We feel it is our responsibility to create and follow our 10-year plan that assesses the needs of current parishioners and anticipates the needs for our future generation of Catholics.

Ultimately, there will never be a perfect time to build. But, if not now, when? If not us, who? As some of our parishioners commented during the Feasibility Study: “Our parents made things happen when times were much tougher, we need to do the same”; “It is never a good time; when you have needs you just need to do it!”; “Inaction or procrastination are not strategies; we need to act on these plans and get this done”. The proposed projects are large improvements to our parish which cannot be accomplished without the funds that a Capital Campaign will provide.

Q. What rooms will the new Parish Center include?

Based upon the currently proposed design, the building provides 17,100 square feet of new space which is an optimal size for the events of our parish. The Parish Center will include restrooms on the ground and lower levels, an elevator (for disabilities access), and stairways near the entrances at the northern and southern ends of the building. The ground level floor will consist of a large multi-purpose space that can provide comfortable seating for 300 guests for receptions, meetings, parties and church sponsored events for parishioners and the public. The ground floor also includes a full commercial grade kitchen with pantry, and a separate room for storage of tables and chairs. The lower level will be divided for up to 10 classrooms primarily for use by our PSR program and as meeting space for a variety of St. John Neumann ministry groups and programs.

If we are able to raise more for funds, we will add a choir practice room, a nursery room and more storage space for our parish groups and ministries and removable walls to divide the larger multipurpose room into three smaller rooms.



Q. Will the new St. John Neumann Parish Center include a basement?

Yes. As currently envisioned by the Long Range Planning Committee and our design partner Meacham & Apel Architects, the Parish Center *will* include a lower level (basement) with some windows to the outside for PSR classes and small group meetings.

Q. Are we using current spaces fully?

With approximately eighty (80) small groups, committees and activities offered at St. John Neumann our buildings are almost always in use. In addition, we currently lack enough space for administrative offices and PSR classrooms. To maximize facility utilization, we now ask all of our groups and ministries to provide annual calendars to the Parish Office each May in order to schedule space and resolve any potential “double booking” conflicts. The parish works very diligently and efficiently to maximize the use of our current limited administration and meeting space.

Q. Where will the Parish Offices be located? Why can't we just keep them located down the street from the Church?

The Parish Offices for administrative and ministry staff will be re-located to the Upper Social Hall, which will be renovated to accommodate them. Relocation of the Parish Offices from down the street is necessary due to our lease arrangement. Additionally, Bishop Campbell allowed us to move the offices temporarily with the understanding that we move back with the next building campaign, where parish offices should be properly located. Funds we currently use to pay our rent will be used to operate the new Parish Center. There is enough current square footage in the Upper Social Hall to provide space for the staff to properly and professionally conduct their work for the benefit of the parishioners.

Q. How will locating the new St. John Neumann Parish Center in the current parking lot impact the availability of parking spaces?

Currently, there are 183 spaces in our parking lots. Our Phase I plans include expansion of the north lot for a total of 249 parking spaces; a net gain of 66 spaces. The additional parking spaces will be added to the north lot before construction of the Parish Center begins.

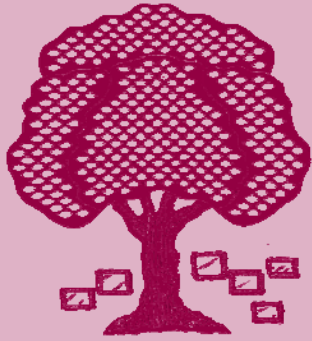
Q. How will this project affect the Shelter House/Pavilion?

This project will have no impact on the current Shelter House/Pavilion. The Shelter House/Pavilion will remain where it is currently located, and will be untouched.

Q: Will Masses or use of the Social Hall be disrupted during the construction of the St. John Neumann Parish Center?

No. Another advantage of building the Parish Center away from the church is that neither Masses nor use of the Social Hall for meetings will be affected during construction. In addition, we won't begin to renovate our current Social Hall into Parish Office space until the Parish Center is complete so as not to disrupt our group gatherings and meetings.

Tree of Life



The Tree of Life will be located in the gathering space. All leaves and rocks will be clearly visible and the Tree will be positioned to allow for unobstructed and well-lit viewing. Donors who pledge at the various gift levels will have their leaf (leaves) placed on the Tree or their rock(s) placed near the base of the Tree. The Tree of Life is a lasting remembrance to the generous aid and caring support of all our parishioners.

Q. Why would my family and I wish to have a leaf or rock on the Tree of Life?

A leaf or rock on the Tree is an everlasting way to remember a loved one; to share your pride in our parish; to celebrate an important, joyous, and memorable event such as the birth of a child or grandchild, a marriage, an anniversary, etc.; as well as a unique way to help your parish financially.

SUGGESTED GUIDELINES FOR GIVING

<u>Total Pledge</u>	<u>Recognition</u>	<u>Gift Level</u>
\$50,000	Large Rock	Summit
\$25,000	Medium Rock	Legacy
\$10,000	Small Rock	Pillar
\$5,000	Leaf with ★★	Builder
\$3,600	Leaf with ★	Heritage
\$2,000	One Leaf	Commitment

Q. When do I submit my personal inscription for my leaf or rock?

Inscription cards will be sent to you soon after you make your pledge. All you need to do is fill out the inscription card as you desire and drop it in the collection basket or mail, or bring the card to the Parish Office.

Q. When will my leaf or rock be placed on the Tree?

About two or three weeks after you return your inscription card.

SAMPLE INSCRIPTIONS

IN HONOR OF PAUL AND MARY BROWN	IN LOVING MEMORY OF RACHAEL JOHNSON	WELCOME TO AMY MATTHEWS BORN 7-14-10
DONATED BY MR. & MRS. M. GILBERT IN MEMORY OF THE PETERSON FAMILY	MR. ROBERT TAYLOR 1923—2010	TO OUR GRANDPARENTS MR. & MRS. THOMAS BRADY LOVE TOM, SUE & BOB

Memorial Opportunities

New Parish Center		Social Hall Renovation (Into Parish Offices)	
Cornerstone	\$500,000	Conference Room (upper level)	\$25,000
Multipurpose Hall (seats 300)	\$100,000	Twelve Staff Offices (upper level)	\$15,000 each
Kitchen	\$75,000	Reception Area/Lobby (upper level)	\$15,000
Nursery	\$50,000	One Large Parish Meeting Room (lower level)	\$15,000
Choir Room	\$50,000	Three Parish Meeting Rooms (lower level)	\$12,500 each
One Expandable Classroom (lower level)	\$25,000		
Eight Classrooms (lower level)	\$15,000 each	Tree of Life Sponsorship	\$12,500
Landscaping	\$35,000		

Please note that there is no direct relationship between the amount of a memorial donation and the actual cost of the item, area or room being memorialized. The amount of the memorial is determined by the significance and desirability of the memorial chosen and is applied to help absorb the cost of the entire project. Memorials are reserved on a first-come, first-served basis and are designated only once in the campaign.

Suggested Giving Plans

FIVE YEAR GIFT TABLE

Gift Level	Total Pledge	60 Monthly Payments	20 Quarterly Payments	10 Semi-Annual Payments	5 Annual Payments
Summit	\$150,000	\$2,500	\$7,500	\$15,000	\$30,000
	\$100,000	\$1,667	\$5,000	\$10,000	\$20,000
	\$75,000	\$1,250	\$3,750	\$7,500	\$15,000
	\$50,000	\$833	\$2,500	\$5,000	\$10,000
Legacy	\$25,000	\$417	\$1,250	\$2,500	\$5,000
Pillar	\$20,000	\$333	\$1,000	\$2,000	\$4,000
	\$15,000	\$250	\$750	\$1,500	\$3,000
	\$10,000	\$167	\$500	\$1,000	\$2,000
Builder	\$7,500	\$125	\$375	\$750	\$1,500
	\$5,000	\$83	\$250	\$500	\$1,000

The Suggested Giving Plans encourage financial commitments over a three-or five-year period. The pledge card provides space for you to designate payment intervals: monthly, quarterly, semi-annually, or annually. Payment reminders will be sent in accordance with the schedule selected. We ask you to keep in mind that it will take gifts at these levels to reach our goal. Pledges enable you to consider a more significant contribution to the campaign rather than a one-time gift.

THREE YEAR GIFT TABLE

Gift Level	Total Pledge	36 Monthly Payments	12 Quarterly Payments	6 Semi-Annual Payments	3 Annual Payments
Builder	\$5,000	\$139	\$417	\$833	\$1,667
Heritage	\$3,600	\$100	\$300	\$600	\$1,200
Commitment	\$2,000	\$42	\$167	\$333	\$667

Your Commitment

Stocks and Bonds

Please consider the advantage of donating appreciated securities - stocks and bonds - to fulfill your pledge commitment. When you donate or "gift" appreciated securities you can take credit for a charitable gift at the present value of the securities, while avoiding the taxes on the profit realized from the original investment, in most cases. (Consult your tax advisor for your specific situation).

Tax Deductible Gifts

All gifts are tax deductible as provided by law. You will be provided with an end-of-year statement of your actual cash contributions for each year.

Matching Gift Programs

Many firms have matching gift programs to provide incentives for their employees to make charitable donations. Many companies will especially match gifts given to capital campaigns that include a school or educational component such as we have. Please ask your human resources or personnel department for a matching gift form. The employee must initiate the process. Both current and retired employees may be eligible.

Automatic Debit

Automatic debits from either checking accounts or credit cards are available. Please contact the parish office for more information at 965-1358 ext. 23.

Planned Giving/Wills and Bequests

You can provide for Saint John Neumann Parish in your will and also realize significant federal and state tax advantages. There are many options for planned gifts, so please consult your tax advisor to select the best vehicle for your situation. You may also call the parish office for assistance.

Pledge Payments

You will receive reminder notices in accordance with the payment plan you select. Please make checks payable to:

Parish Center Fund.

Pastor

Rev. David W. Sizemore

Church

St. John Neumann Parish
810 W. Cherry St., Suite 120
Sunbury, Ohio 43074

Tel: 740.965.1358