

Building Project Update for St. John Neumann

May 21 and 22, 2011

Site Plan

– not final



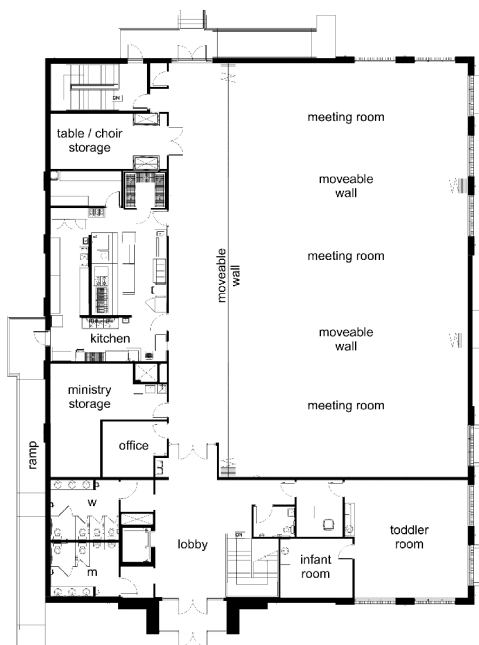
ANNOUNCING MORE PARKING!!!!

We are currently in dialog with the contractors to add even more parking spaces to a total of a little over 400 (shown in site plan), more underground drainage systems, larger detention pond for rain runoff, moving the pavilion and playground to the west field, larger septic system, an integrated technology and security system for all three buildings.

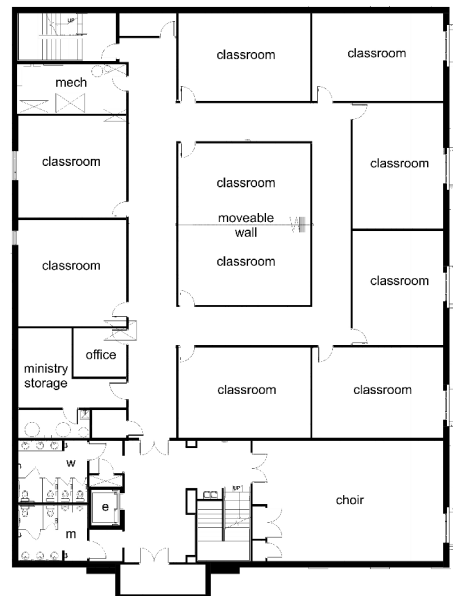
Yeah! Praise God!

Parish Community Center

The Parish Community Center includes a multipurpose space that can accommodate up to 300 people seated at tables, an enhanced kitchen, nursery, and storage on the ground level. The lower level includes 10 rooms for faith formation and group meetings, choir practice room and more storage! A two-stop elevator services the building.



Ground Level



Lower Level

Renovation of the Existing Building to Parish Offices



Renovation of the existing parish social hall includes subdividing 2,725 SF of the first floor to create parish offices and upgrades to 2,341 SF of the basement level into 5 meeting rooms. This building project was designed by M + A Architects and is being constructed by Elford, Inc., both companies are based out of Columbus.

JOIN US on Sunday, June 12...

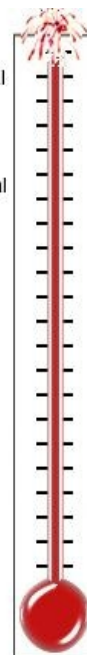
...when we will officially break ground on our building project for a new 21,000 SF two-story Parish Community Center, renovations to the existing social hall, and additional parking. The groundbreaking ceremony will immediately follow the 11:00 a.m. meadow Mass on parish grounds, followed by a parish picnic. **Wear your construction clothes and hard hats for the group picture!**

It is never too late to give to the campaign.

We continue to see pledges and gifts come in as the project comes to reality in the short term. When we started the campaign, we did not know we would be able to build so quickly. If you would like to be a part of this milestone project, pledge cards are available in the Information Lobby at the West Entrance to Church or at the Parish Office. Place in the collection basket or mail to the Parish Office at 801 W. Cherry Street, Suite 120, Sunbury, 43074. Contact Jackie Sutton at 740-965-1358 ext 23 for more information.

\$3,600,000
Challenge Goal

\$2,950,000
Campaign Goal



\$4,307,467!
We did it! Thank YOU!